

## Manhole Cover 600 dia., 760 x 760

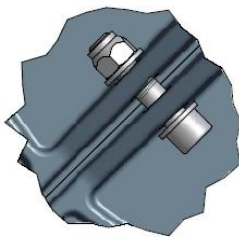
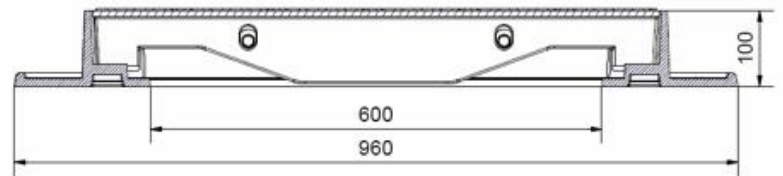
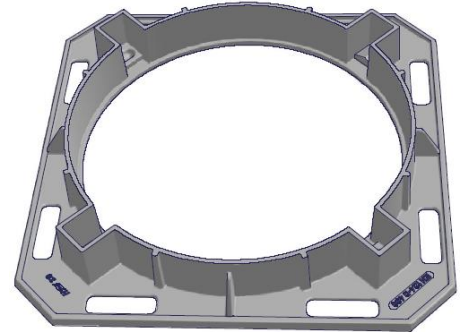
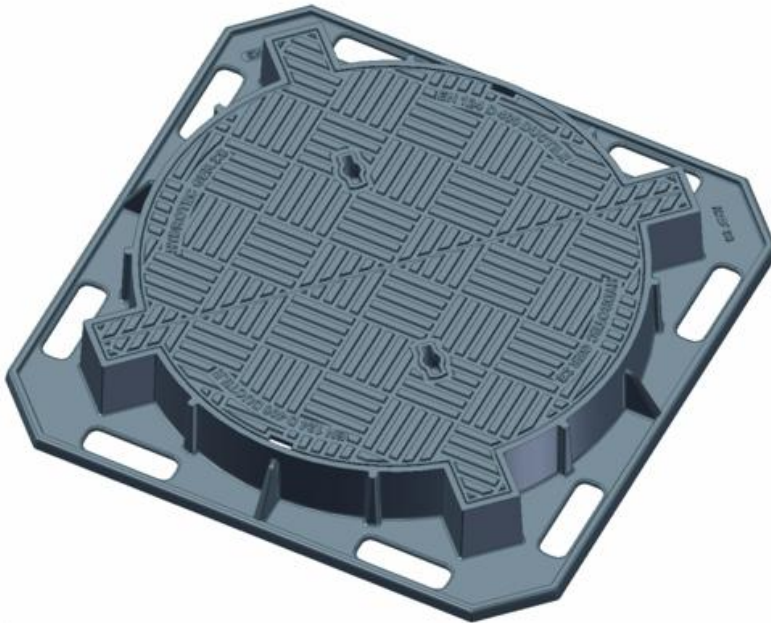


ISO 9001-2000

Norm  
Standard  
**EN124**

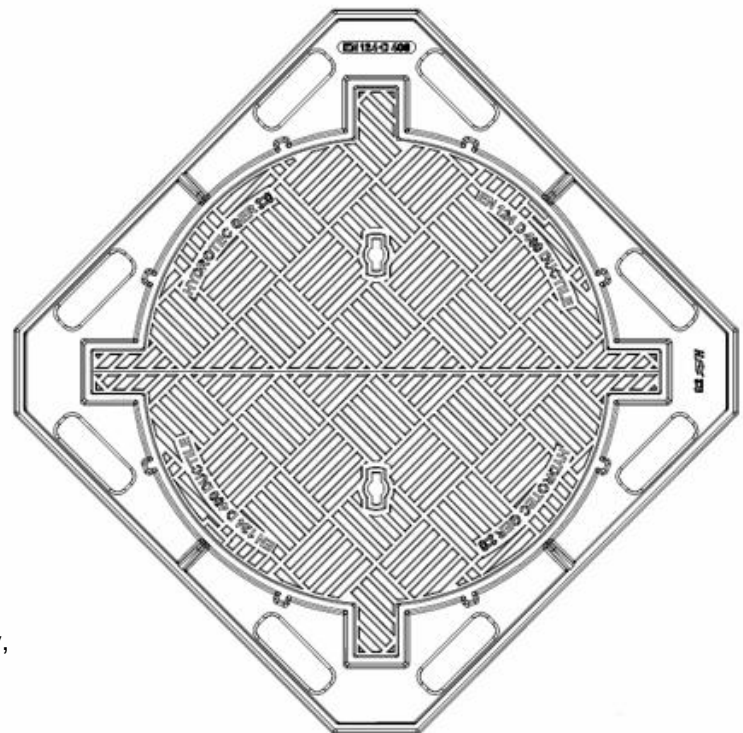


Klasse  
Class  
**D400**



Detail:  
Connection between covers

- Double triangular
- GRP can be adapted
- Covers coupled by means of 2 nos stainless steel bolts
- Criss-cross design - optimal slode safety, minimization of roll-over noise



Änderungen vorbehalten! / subject to alterations in measurement and design!